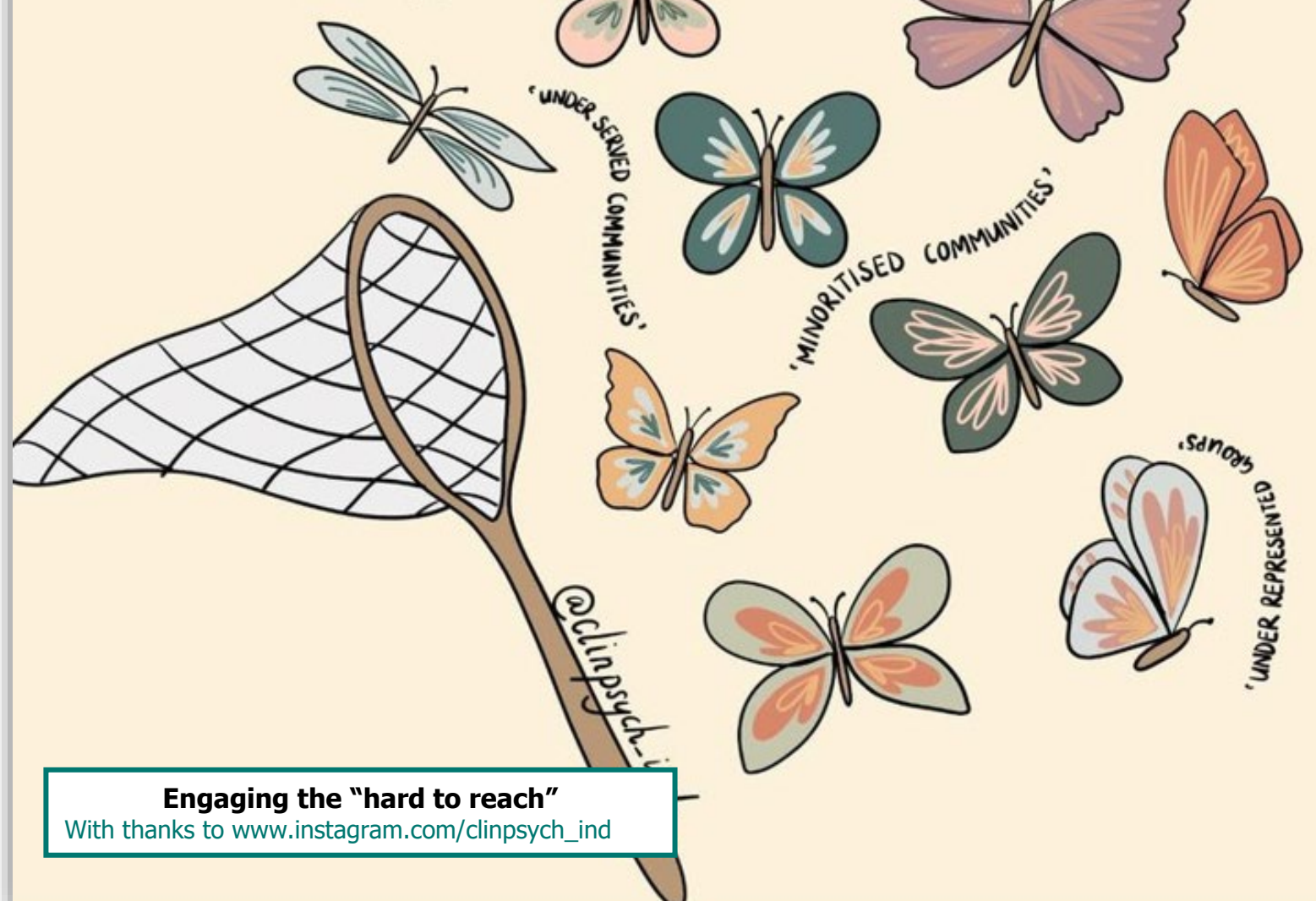


WHEN TRYING  
TO ENGAGE THE  
'HARD TO REACH',  
ARE WE CONSIDERING  
WHAT NET WE  
ARE USING?



**Engaging the "hard to reach"**  
With thanks to [www.instagram.com/clipspsych\\_ind](https://www.instagram.com/clipspsych_ind)

WHEN TRYING  
TO REACH THE  
'HARD TO REACH'  
ARE WE CONSIDERING  
WHAT NET WE  
ARE USING?

NO CLIENT-LED INITIATIVES  
NON-DIVERSE STAFF TEAMS  
RIGID DNA POLICY  
EXPENSIVE PARKING  
NO OUTREACH PROJECTS/WORK  
NOT ACCESSIBLE  
NO SERVICE EVALUATION  
LACK OF CULTURAL HUMILITY  
NO TRANSLATOR

@chrispsych-iaod

